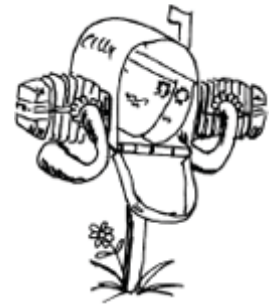


The Mail Boxer

October 2013

BMW MOA #7 • BMW RA #5



The Prez Says

Greetings all,

Not much to talk about.

The season is starting to wind down. Some will ride thru November, and the rounders will continue no matter what Mother Nature throws at them .

The fall banquet will be Saturday, November 9th. More info at the October 6th breakfast. There was a posting on the listserv.

The leaves are starting to fall, with wet weather to follow, so watch out for slippery areas and the problems they will create.

Reminder....breakfast will be at the Hilltop Inn.

Ride safe, see you at the October breakfast.

Dick Olson

Dick recently asked Sue Rihn how she is doing after the Westby club ride incident ...

A note from Sue:

I am doing very well, thanks for asking. It's been 6 weeks since the crash, and I feel like I am back 100%, with the small exception that I don't think my hemoglobin has recovered yet. They said it could take between 2 - 3 months for that, and I believe it.

I hope I see you at the Slimey Crud next weekend. I plan to be there on my old K75, unless it's raining and miserable.

Thanks again for all you did for me. :)

Sue

Upcoming Events

October 6, 2013
Club Breakfast
Hilltop Restaurant
Cty. P, Pine Bluff
Meeting at 9:00 am
Breakfast at 9:30 ...

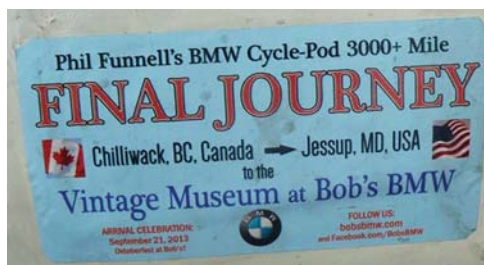
... followed by ...

The Slimey Crud Run!!!
Pine Bluff in the morning
Leland in the afternoon
See 1000s of bikes, all
different makes & models at
this unofficial MC event
(see page 4)

November 9th, 2013
Club Banquet
Elks Club,
711 Jennifer Street,
Madison, WI
(see pages 3 & 5)

December 1st, 2013
Club Breakfast
Hilltop Restaurant
Cty. P, Pine Bluff
Meeting at 9:00 am
Breakfast at 9:30

History in the making...



If you were at the Dells Rally, or perhaps just happened to be at the ferry terminal in Milwaukee, you may have seen this. It was attached to one heck of a customized BMW, making its last adventure to its final port of call -- Bob's BMW Vintage Museum. More on page 3 »

**BMW Motorcycle Club
Ride, Eat, Ride
Madison, Wisconsin**



Madison BMW Club

P.O. Box 152
McFarland, WI 53558

President: Dick Olson

608-838-8550
president@madisonbmwclub.org

Vice President: Dawn Feneht

608-277-0731
flyinghome@charter.net

Secretary: Sherry Atkinson

608-214-5052
theflyingwitch@yahoo.com

Membership: Jim Low

608-838-2690
membership@
madisonbmwclub.org

Treasurer: John Ong

608-222-6489

Website Editor: Sam Hokin

sam@bsharp.org

Newsletter Editor: Heidi Goehring

608-256-4982
editor@madisonbmwclub.org

Activities Director:

Bert Hefty

activities@madisonbmwclub.org

Rally Chairs: Katy Heyning

& Judi Trampf

608-242-8488
rally@madisonbmwclub.org

ListServ Email Open Discussion

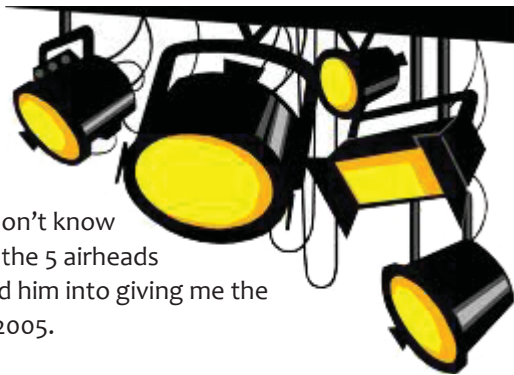
Madisonbmwclub@
lists.madisonbmwclub.org

Not a ListServ member?

Send a blank email to
join-madisonbmwclub@
lists.madisonbmwclub.org

Club Spotlight

Chris Eisenhauer



We grew up around motorcycles, so I don't know what took me so long. My Dad still has the 5 airheads from when I was a kid. (I recently talked him into giving me the 1964 R60/2 though.) I started riding in 2005.

I was living in Colorado, and was jealous enough of my sister riding around, so she taught me the basics on a 1982 Yamaha Exciter SR185. I took the written test and 6 months later the driving test. My first bike was a 1981 Honda GL650i. After having an unnerving high speed wobble on the silverwing (going 75 on a curve on the interstate), I decided to look for and upgrade to a BMW, which was a Bermuda Blue 1991 R100RT.

I don't know if I'm an "official" Madison club member yet. I joined in late 2010 after I took a job in Middleton and moved from Indianapolis back to Wisconsin. For the first year we were living at the family farm between Watertown and Johnson Creek, and I was commuting to Middleton. In Feb 2012 we bought a house in Middleton so I've made it to a few more meetings/functions. It's my intention to host a tech day sometime, to have club members work on my motorcycles, I mean, um, learn from the members' collective experience. Wrenching on the R60/2 might be a good excuse.

What brought us back to Wisconsin was the desire to be closer to family. I work for the Dept. of Veterans Affairs (NCCPAC), where we're doing administrative functions for the VA hospitals in the region. My wife is Holly, and we now have two kids, a 3 year old daughter Allis and 6 month old son Will. Holly is a CPA and works for SVA, a regional accounting firm.

This Month's Photo

Submit your caption on the club's Facebook page.



Secretary's Report

by Sherry Atkinson

No September Meeting

Next meeting will be in October at the Hill Top. This is also crud run weekend.



See you in October!

Secretary Sherry

Mark your calendar

...for the **BMW Banquet** on

Saturday, November 9th at

the **Elks Club** in **Madison**, WI

(same place as last year)

5 p.m. cocktails • 6 p.m. dinner

The Club will pay for **\$10 OFF** the your menu selection (**members only*)! Deduct it prior to writing a check to the Madison BMW Club, write your menu choices on your check, and pay John at Oct. 6th breakfast at the Hilltop. I will have a sign-up sheet for names & meal choices. If using cash (at breakfast only), round up to the next dollar as John will not be giving change or figuring out what you owe. So bring a check & make it easier on John.

AND ... don't forget to **send in** your **Cherished-but-Totally-Insignificant Awards Form** ... Heck, fill it out now and bring it with you to the meeting!

Menu items:

New York Strip Steak (15 oz. Medium Rare)	\$24.83
<i>* members price</i>	\$14.83
Double Fan-Tail Fried Shrimp (5 pcs.)	\$24.83
<i>* members price</i>	\$14.83
Chicken Maison (w/ mushroom & shallot sauce)	\$16.12
<i>* members price</i>	\$6.12

Sides include: Salad and Au Gratin potatoes.

(Special dietary needs can be accommodated.)

Prices include tax & tip.

Cash bar. (Your on your own here.)

The **Final Count & Payment deadline** is **October 31st**.

Tsaritsa Dawn

Meet Phil Funnell »

A cross between Burt Munro ("The World's Fastest Indian") and Alvin Straight, (the guy that rode a riding mower to Wisconsin from central Iowa, chronicled in "The Straight Story"). Phil is an absolute treasure. -- Sam Hokin --

Phil stopped at the Dells Rally on his way to Bob's in MD. If you had a chance to talk to him, you found your jaw gaping open with his adventure stories. He's been all over on BMWs, and is in the Canadian Motorcycle Hall of Fame. At one time, he operated the largest BMW dealership in Canada.

Watch future newsletters for more information about this amazing man.



the Crud run ... a rolling museum

from Pine Bluff ...



... to Leland

Join us
Oct. 6 for
the Slimey
Crud Run

Madison BMW Club

Cherished-but-Totally-Insignificant Awards Form

Members!! Please fill out all the blanks below and send this form to Tom Van Horn at: 302 Glen Hwy., Madison, WI 53705 by November 2nd. Estimate your BMW miles ridden between January 1st and October 31st, 2012 (to the nearest 100 miles). You may use this form for more than one rider but please separate with different ink colors or a slash (/) mark.

Name _____

For 2012, your total BMW miles ridden _____

Divide your totals into:

Commuting Miles _____ Sport or day ride miles _____ Touring miles _____

My co-rider _____ was along for _____ miles.

My/our longest trip was _____ miles over _____ days.

Most miles in one day _____; two days _____

Number of nights in a tent: _____; in a motel _____.

Number of states/provinces ridden in _____

Miles in the rain _____

Number of rallies attended (not club rides) _____

How many GR3 rallies total _____

Sidecar miles _____

Trailer miles (motorcycle on trailer does not count) _____

Estimate your total overall mileage on every BMW you have had _____

How many years riding _____

Share any unusual or memorable incidents you have had this year. _____

Who should this year's shafty character be? _____

Who should get special mention for service to the club and why? _____

Mischler's
BMW SINCE 1958

N8131 KELLOM ROAD BEAVER DAM, WI 53916
920.887.8425

BMW Motorrad
USA
Motorcycles
since 1923



Stop in and see our wide selection on hand!

APEX
CUSTOM COATING

Powder Coating, Media Blasting,
Metal Finishing, & More

Apex Custom Coating LLC

2217-2 Parview Road, Middleton, WI 53562

608-444-2202
apexcc@charter.net

Sure



I can drive a stick

Tire Mounting?

Steve Parker is mounting and balancing tires.
\$20 per. You take off wheel and bring to him.
You discard old tire.

Steve's email is teven@tds.net
His phone is 608-240-2929.

The Madisonmotorsports website and
email are GONE.

RELISH TODAY



KETCHUP TOMORROW

IF YOU CAN READ THIS
 **YOU'RE IN RANGE**

SCHLOSSMANN
MOTORCYCLES  **OF MILWAUKEE**

BMW Motorrad
USA
Authorized
Dealer



12011 W SILVER SPRING DR. MILWAUKEE, WI 53225 | 414-358-2465

Winter motorcycle storage packages starting at \$199...

visit us online at www.motorcyclesofmilwaukee.com
for complete package details and pricing.

THE ROAD IS WAITING,
BUT YOU DONT HAVE TO.

Last Month's Photo

Captions submitted:

- John Bollig — *This is the logical outcome of running Lucas electrics.*
- Corrine Jutz — *I knew that laser beam would do the trick. Now if only I didn't burn out peoples retinas!*
- Sam Garst — *All I wanted was a frickin shark with a frickin laser beam and you give me a p.o.s. bike with a camp lantern!*



Improvised Repairs -- pt. 2

Warning: Emergency repair procedures can involve hazards and risks to health, life and safety. Do Not undertake improvised repairs or self-help procedures without first considering your own capabilities and circumstantial factors like weather, traffic conditions, etc... Your first responsibility is to safety.

Time Matters: don't rush any job, even if your riding 'friends' are screaming at you. Hurrying makes everything worse. Truly amazing field repairs are possible if you have enough time and patience.

Circumstances count: It's impossible to rebuild a leaking carb on the side of a busy freeway at midnight during a typhoon. Shut off the gas and push the pig elsewhere. Mechanical emergencies seldom occur at ideal locations or convenient times. If you must disassemble complex items over a grassy or earthen surface, first spread a cloth beneath the work area. Use a shirt or a towel if you don't have a suitable rag. Even a wide flat board will do. Mother earth has a healthy appetite for tiny motorcycle parts.

React to the unusual: Half of the time it will turn out to be nothing but your mind playing paranoid tricks. But the rest of the time subtle changes will indicate actual problems. Is a strange vibration or new sound connected more with the engine rpms (?), or to the bumps and cracks on the road? If an unknown fluid suddenly appears on your boot or pantleg, pay attention to it. It won't go away by itself. And pay attention to routine stuff. Maybe the chain's masterlink clip really *has* fallen off.

Improvise: Many motorcycle parts are common enough to work across brands, applications and models. Non-interchangeable parts are sometimes surprisingly interchangeable. When disassembling things that are broken, never throw anything away, no matter how small.

Everything fits somewhere. Even shards of bent, grenaded metal and fragged plastic need to be pressed back into service with a little epoxy.

Electricity is magic: An artfully bent paper clip can replace a broken spark plug cap. Any piece of wire can jump a blown fuse, but make sure the short is corrected first. Carry a small multi-meter, some electrical tape and the bike's wiring diagram. Soldering can supposedly be done with a few match heads and a little piece of tinfoil if your name is MacGyver.

Helpful Consumables: Duct tape, Miracle tape, JB weld, super glue, etc. All are handy. Epoxy will patch a leaking steel gas tank. Position the leak above the gasoline level and go to it. Never, ever use silicone sealer around gasoline, like on a leaky petcock or anything. It will turn into a gelatinous napalm booger and cause problems.

Perseverance works: the motto "if at first you don't succeed, try, try again" is as true as always. Carefully disassembling anything that is not functioning and then putting it back together will solve or fix a hidden problem about 80% of the time. After you have tried this for the third time without success, take a break. Carefully lay ever removed part out in sequential order so you can see how things go back together.

(from *Lightweight: Unsupported Motorcycle Travel for Terminal Cases*, by Aero Design & Mfg. Co. Inc. ~ aka Aerostich)

Madison BMW Club Membership Form

First _____ Last _____

Address _____

City _____ State _____ Zip _____

Home# _____ Work# _____ Cell# _____

E-Mail Address _____

Are you a New Member Y / N or are you a Current Member Y / N

MOA# _____ RA# _____

Bikes Owned _____

Interests, comments, etc... _____

Please send the Mail Boxer via e-mail Y / N 1 calendar year membership* \$20.00 / family + \$5.00**
** After June 30, dues are 1-year membership \$10.00 / family + \$5.00 **

* *CURRENT MEMBERS*: Please update any information that may have changed for the directory. Thank you!

